



**Know what's below.
Call before you dig.**

Call 811

- *BEFORE* any marine construction activity in waterways, lakes, bayous or rivers.
- *BEFORE* building fishing piers, bulkheads or camps.
- *BEFORE* working with heavy equipment that use spuds or anchors near the water or waterways.
- *BEFORE* driving posts or pilings into the water or in the ground near the water.
- To get pipelines marked *BEFORE* you start your project.



This Marine Pipeline Safety Message brought to you by Barataria – Terrebonne National Estuary Program, Coastal Conservation Association of Louisiana and CAMO “Coastal And Marine Operators” Pipeline Industry Group. CAMO pipeline safety information is available free-of-charge. For more information go to www.camogroup.org. Additional pipeline info can be found at www.npms.phmsa.dot.gov.

Send your comments or questions to
info@camogroup.org.



**Know what's below.
Call before you dig.**

*Call 811 to save lives and the environment.
When you plan for a safe day on the water,
don't forget to plan for pipelines.*



**Preserve
Our Waters
for Future
Generations**

Preserve Our Waters for Future Generations

- Keep Yourself Safe. Avoid Pipelines
- Report Any Release or Suspicious Activity to Authorities
- Call 811 to Locate Pipelines



Environment and Industry
Working Together
www.camogroup.org
www.BTNEP.org

Keep Yourself Safe!

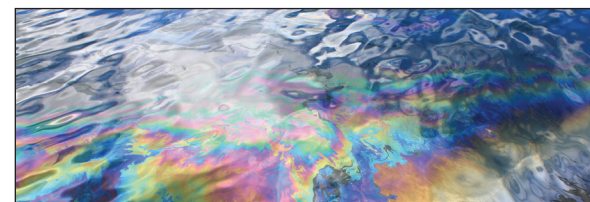
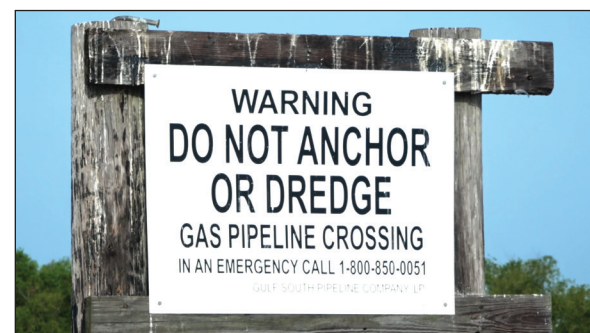
- Just as important as wearing your life jacket, learn the importance of avoiding pipelines.
- Look for "Pipeline Warning" or "Do not Anchor or Dredge" signs or markers on the banks or in waterways. Signs usually have the company name and emergency contact number. In these waterways, ALL water bottom contact MUST be avoided.
- Avoid tying your boat to pipeline signs and/or pipeline, oil and gas infrastructure.
- NOTE: Electric, Fiber-Optic, Water, Phone, Cable and Gas lines also run underwater and the same guidelines to prevent damage apply.



Report leaks!

Look for these signs:

A continuous bubbling, blowing or hissing sound coming from the water.



- A rainbow sheen or unusual colored, oily residue.
- A hydrocarbon (gaseous) smell on the water's surface.

Act immediately if you suspect a leak!

- Shutdown or minimize the use of all possible ignition sources like motors and lights. If possible, drift out of the area before starting a motor or ignition source.
- Evaluate the situation, record your exact location and move upwind at least ¼ mile away from the affected area. When safe, call 911.
- Prevent and warn other vessels from entering the area.
- If you see a pipeline sign nearby, call the emergency number listed.